

What is asbestos?

Asbestos was once used as a building material, but it was fully banned in 1999. However, buildings constructed pre 2000 may still contain it. If left alone, it isn't dangerous, but disturbing and breathing its fibres poses a major health risk.

What does asbestos look like?

- Asbestos is a fibrous material
- It comes in different colours, shapes, and forms
- Asbestos fibres can't be seen once they're in the air



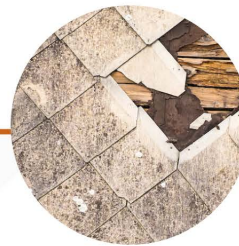
Where is asbestos found?



Pipes



Ceiling/floor tiles



Roofing



Window framing



Ductwork



Guttering



Boiler insulation



Cement and plaster

What should you do if you find asbestos?



STOP
what you're doing



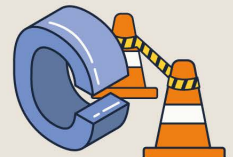
LEAVE
it alone- do not disturb or try to remove it



ALERT
a teacher or senior staff



CLEAN
your clothes, skin and hair if they've come into contact with asbestos



CLOSE
off the area - warnings should be displayed



SEEK MEDICAL ATTENTION UPON EXPOSURE TO ASBESTOS - IF YOU DON'T KNOW LEAVE IT ALONE